

*Carelife USA Inc.* provides superior medical products throughout the world. We continue our long term commitment to provide quality diabetic products consisting of pen needles, ReadyLance™ safety lancets, twist and pull top lancets as well as assorted lancing devices. New products are in development and are soon to be added to our product offerings. These include a complete line of insulin syringes, safety syringes, IV infusion sets and dental supplies.

Carelife also offers complete design, manufacturing, regulatory and fulfillment infrastructure with the expertise to provide any and all phases of private labeling and OEM/ODM (Original Design Manufacturing).

From product design to use, Carelife USA will be the manufacturing partner you need for growing your product offerings.



Choose  
Carelife  
Get  
assurance of  
Your  
Life



#### Ultrafine Needles

Special triple sharpened needles minimize skin trauma and discomfort.

#### Silicone Coated Needle Tips

Needle tips surface entirely coated by silicone. It minimizes the force for needle penetration during injection. Thereby, the injection causes less discomfort

#### Safe and sensitive injection

To minimize pain by using:





- 1) Needle tips engineered for comfort.
- 2) All needles with silicone coated.
- 3) Thin wall technology ensures an big inner dimension of the needles for sensitive insulin delivery.
- 4) Safe luer connection protects against "wet" injections.

OEM Orders are welcome!

Specification	32Gx4/5mm, 31Gx4/5/6/8mm, 30Gx4/5/6/8mm, 29Gx12mm
Box	100pcs
Case	5000pcs
Sterilized by	ETO



### FOR USE WITH MOST CURRENTLY AVAILABLE INSULIN PEN!

Needle Length	Injector profile	Comments
 32Gx4mm	<ul style="list-style-type: none"> <li>• Children</li> <li>• Thin adults</li> </ul>	For children and adults of BMI 20-49
 31Gx6mm	<ul style="list-style-type: none"> <li>• Children and adolescents</li> <li>• Thin adults</li> <li>• Normal weight adults</li> </ul>	Adults who use a lifted skin fold should use the 6mm under supervision of their healthcare professional
 30Gx8mm	<ul style="list-style-type: none"> <li>• Normal weight adults</li> <li>• Overweight adults</li> </ul>	Overweight adults may be able to use an 8mm without a lifted skin fold under supervision of their healthcare professional
 29Gx12mm	<ul style="list-style-type: none"> <li>• Overweight adults</li> </ul>	Which is a good choice for people with dexterity problems or those who take larger doses. The wider inner diameter makes it easier to press the push button and expel insulin



*Offering lancets from 21G to 33G !*

- Tri bevel sharpened cannula
- Compatible with most lancing devices
- Packaged in dispenser style boxes
- Manufactured in class 100K clean rooms
- Gamma sterilized with 5 year shelf life



*OEM and Private label in your size and color is available!*

Size	21G, 26G, 28G, 30G, 33G
Color	yellow, green, purple, blue, white
Box	50pcs, 100pcs, 200pcs
Case	10000pcs
Sterilized by	Gamma Radiation



*Offering lancets from 28G to 33G !*

- Tri bevel sharpened cannula
- Compatible with most lancing devices
- Packaged in dispenser style boxes
- Manufactured in class 100K clean rooms
- Gamma sterilized with 5 year shelf life



*OEM and Private label in your size and color is available!*

Size	28G, 30G, 33G
Color	purple, blue, white
Box	50pcs, 100pcs, 200pcs
Case	10000pcs
Sterilized by	Gamma Radiation



## Pressure Activated Safety Lancets

ReadyLance™ is the newest and most innovative safety lancet designed for a convenient, easy and safe method for procuring blood samples.



*offering the most choices in gauge size!*

Reorder#	Gauge/Depth	Color	Suggested Applications
RL30-1.60	30G/1.6mm		babies, children, petite adults – or small sample need for glucose level monitoring
RL28-1.80	28G/1.8mm		adults - providing larger blood samples for Glucose, A1C, Cholesterol etc
RL26-1.80	26G/1.8mm		
RL23-2.20	23G/2.2mm		Hemoglobin(blood banks),cholesterol, blood typing,coagulation,blood gas and other diagnostic tests
RL21-2.28	21G/2.2mm		
RL21-2.2	21G/2.2mm		
RL18-2.28	18G/2.2mm		Use on Neonates Heels for Congenital Hypothyroidism and Phenylketonuria (PKU)

- **Unique, new ergonomic style for safety lancets**

Easier and more comfortable to grip than round or square devices  
Provides more control of pressure needed to activate

- **Smaller round top**

Minimizes amount of pressure needed to activate  
Less discomfort to patient

- **Automated, insert molded lancet**

Completely protected cannula  
Provides more consistent quality  
Assures sterility of product until ready to use  
No caps come off during shipping and storing of product

- **Tri bevel sharpened point**

Provides highest quality of industry standard for cannula sharpness  
Less pain procuring blood sample

- **Patented internal spring mechanism**

Provides smoother delivery of cannula  
More stable delivery reduces pain and discomfort to patient  
Easiest safety lancet to activate

- **Offers most gauge sizes – 18g, 21g, 23g, 26g, 28g, 30g**

Patient can customize to their need to be able to procure proper blood sample

- **Space saving packaging**

Takes less space on shelves  
Saves in shipping and delivery costs  
100 per box, 10 boxes per case

- **Molded in class 100K clean room**

- **Gamma sterilized, 5 years shelf life**

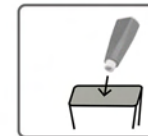
### Convenient



### Easy

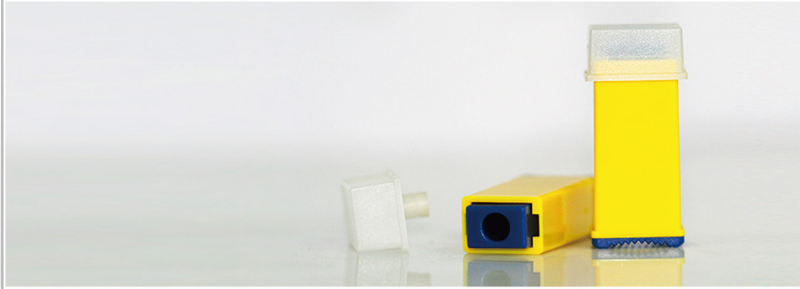


### Safe



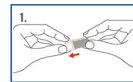


- Simple one-step function
- Non-reusable safety feature
- Available in six models
- Packed 100 per box-20 boxes per case
- Custom colors and packing available



## Instructions for use:

*Clean test site prior to use.*



1. Pull off protective cap.



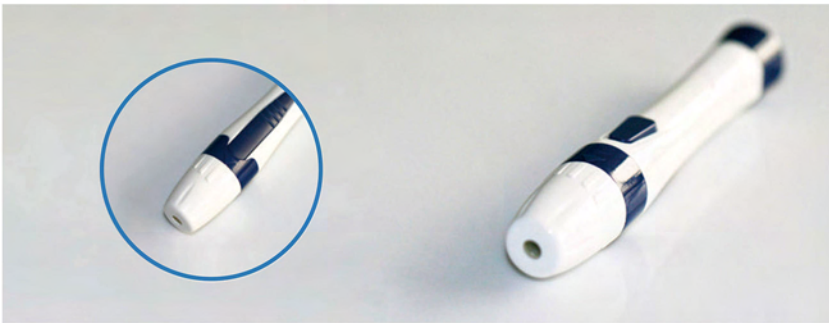
2. Place Medit Lancet onto test site.



3. Push firmly against test site.



4. After use —, dispose into appropriate "sharps" container.



- New design with lancet ejector provide non-touch lancet removal and preventing contamination
- Comfort blood sample collection through 6 levels adjustment
- Compatible with most popular lancets
- Adjustable AST cap available

▲ This device is intended for single person use – not to be shared with others!



*ADJUSTABLE  
Alternate Site Test cap (AST)*

- Light weight, easy to activate and use
- Solid, smooth, simple push button action
- 5 penetration depth settings to promote user control and preference
- Optional clear alternate site end cap that allows the device to be used for testing on alternate sites such as the forearm for painless testing

▲ This device is intended for single person use – not to be shared with others!

# Insulin syringe



Ultra thin

sharp and specially lubricated needles



Size:	29 gauge 1ml, 0.5ml, 0.3ml, (12.7mm) 30 gauge 1ml, 0.5ml, 0.3ml, (5mm,8mm) 31 gauge 1ml, 0.5ml, 0.3ml, (4mm,5mm,8mm)
Box:	1PC/Blister Pack, 10Packs/Polybag, 10bags/Box
Case:	3000pcs
Sterilized By:	ETO

- With extreme thin fixed and special triple sharpened needle
- Special design for insulin injection of 100 units or 40 units
- Unique, practical, and easy for use
- "Safe Stop" plunger to prevent accidental spilling of your insulin
- Made from the highest quality products using world class standards



CE 0123

# Retractable Insulin syringe



Size:	29 gauge 1ml, 0.5ml, 0.3ml, (12.7mm) 30 gauge 1ml, 0.5ml, 0.3ml, (5mm,8mm) 31 gauge 1ml, 0.5ml, 0.3ml, (4mm,5mm,8mm)
Box:	1PC/Blister Pack, 10Packs/Polybag, 10bags/Box
Case:	3000pcs
Sterilized By:	ETO

## 3 Steps to achieve safety



1 Pumping fluid, exhaustion air



2 Pulling back after injection



3 draw out the plunger



CE 0123



# Disposable Syringe

510K

With needles

Two parts & three parts

Luer lock or Luer slip

Non-toxic and non-pyrogenic

High barrel clarity

Easy readability, accurate and clear scale markings



Size:	1, 2, 3, 5, 10, 20, 30, 50ml
Inner packing:	1pc/polybag or blister pack
Box:	100packs/box
Expiration date:	3 years from the date of manufacture
Sterilized By:	ETO



FDA  CE 0123

# Disposable Irrigation Syringe



Flat Type

Ring Type

Ring Type

Bulb Type

- Made by virgin high quality medical grade raw material
- High transparent barrel and clear graduation marks
- Catheter tip can fit different gauges tubes and catheters
- Smooth gliding action easy to operate
- Latex and latex free plunger available
- Individual poly bag packing available
- 50ml and 60ml available
- Not use for injection
- Single use only, destroyed after use



FDA  CE 0123

  
www.carelife-usa.com  
CareLife USA Inc.



- \* Round synthetic spike without integrated air vent and filter
- \* With "Y" injection port and latex-free:
- \* Flexible tubing with standard length of 150 cms;
- \* With Easydrop IV flow regulator and precise fluid filter
- \* Disposable use of venous tranfusion
- \* Sterilized with E.O. gas. Non-toxic, Non-pyrogenic



## Hospital IV



**6000N** 92" 20drop/ml, Vented chamber, Robert clamp, GVS flow regulator, needle free Y-site, rotating luer lock



**5500** 92", 20drops/ml, vented chamber, Robert clamp, GVS flow regulator, rotating luer lock,



**5000** 92", 20drops/ml, vented chamber, Robert clamp, GVS flow regulator, injection Y-site, rotating luer lock



**2500** 18", female luer connect, GVS flow regulator, injection Y-site, rotating luer lock

## EMS IV



**961001N** 96", 10drops/ml, non-vented chamber, roller clamp, needle free Y-site, rotating luer lock

**961001** 96", 10drops/ml, non-vented chamber, roller clamp, injection Y-site, rotating luer lock



**722001** 72", 20drops/ml, non vented chamber, roller clamp, injection Y-site, rotating luer lock

**726001** 72", 60drops/ml, non vented chamber, roller clamp, injection Y-site, rotating luer lock



**832003** 83" 20drops/ml, non vented chamber, roller clamp, injection Y-site, needle free Y-site, rotating luer lock

**836003** 83" 60drops/ml, non vented chamber, roller clamp, injection Y-site, needle free Y-site, rotating luer lock



**722002** 72", 20drops/ml, vented chamber, roller clamp, needle free Y-site, rotating luer lock

**726002** 72", 60drops/ml, vented chamber, roller clamp, needle free Y-site, rotating luer lock



**722003** 72", 20drops/ml, vented chamber, slide clamp, roller clamp, needle free Y-site, rotating luer lock

**726003** 72", 60drops/ml, vented chamber, slide clamp, roller clamp, needle free Y-site, rotating luer lock

- Sharp tri-bevel point, for maximum comfort
- Screw-in system: inch type, metric type and universal type
- Unit package: heat-sealed plastic container or label
- Butt-end: length: 11mm



Type of thread:	Inch or Metric
Size:	27G, 30G
Length of needle:	8mm - 38mm
Hub color:	yellow, red, blue

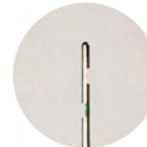
Type of thread:	Universal
Size:	27G, 30G
Length of needle:	8mm - 38mm
Hub color:	grey



- Disposable dental irrigation needle use for canal clean
- Bendable needle tip designed for irrigation of canals, pockets and fistulas
- Universal luer lock style hub



**Type I**  
Close end,  
side-port cannula



**Type II**  
Close end,  
double-bore cannula



**Type III**  
Blunt end,  
half-cut cannula



**Type IV**  
Blunt end cannula



## Flow Tips



- Pre-bented to the proper angle for placing enchants, sealants cements and other flowable materials
- Used for cleaning teeth
- All types of flow tips to meet your special requirements



## Curved Tip Syringe



- Disposable plastic dental impression syringe for single use
- Ideal for teeth clearing, impression material injection, family care after operation and the fluoride treatment
- OEM orders are welcome!

## Luer-Lock Endo Irrigation Syringes



3cc

6cc

12cc

20cc

- Ideal for surgical site irrigation
- Compatible with all luer style needles and hubs
- Disposable, non-sterile
- Available in 4 sizes: 3cc, 6cc, 12cc, 20cc



---

***Carelife USA Inc.***

1580 Boggs Road, #500, Duluth, GA 30096

Tel: (770)935-6533, (770)935-6499

E-mail: [info@carelifeusa.com](mailto:info@carelifeusa.com)

[www.carelife-usa.com](http://www.carelife-usa.com)